

Prom Dress Code

Prom is a formal and special night for SJPII students. We hope to maintain the integrity and formality of this night by implementing these simple dress code expectations; as such any students not appropriately dressed will be turned away at the door. There are hundreds of beautiful, tasteful, and appropriate dresses available for prom. If you have questions concerning your dress, it is your responsibility to seek prior approval from administration.

Prom is a formal event and you are expected to wear formal attire. Formal prom attire may be classified as a dress, tuxedo, dress suit, including a tie or bow tie, a dress shirt, which may include a vest or cummerbund, and dress shoes.

- Dresses may not be strapless
- Dresses may be backless, as long as they are not cut below the naval.
- 2-piece dresses may only show a modest amount of midriff.
- Dresses may not have a slit that exceeds mid-thigh.
- Dresses may not be cut below the bust line.
- Dresses can not have cuts, slits in them exposing skin underneath.
- Undergarments should not be visible. See-through apparel is not permitted.

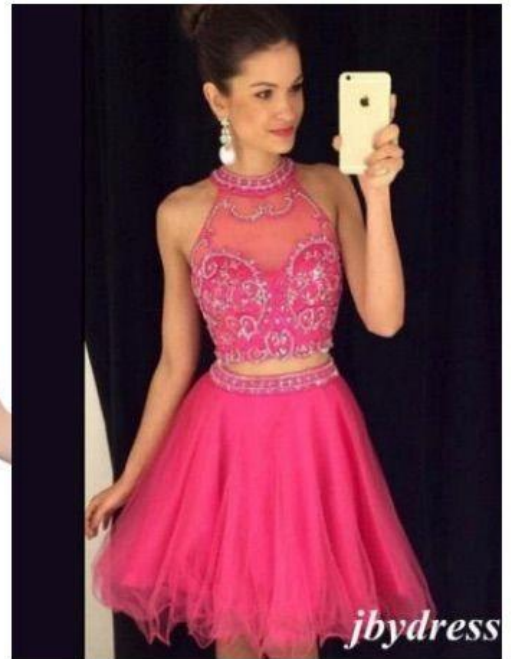
Acceptable Dress Styles



Modest shorter length



Modest keyhole



Modest midriff

Not Appropriate Dress Styles



Too short



Keyhole too low



Midriff too revealing and opening by leg to high

Acceptable Mens Styles



Shirt and Tie, Dress pants

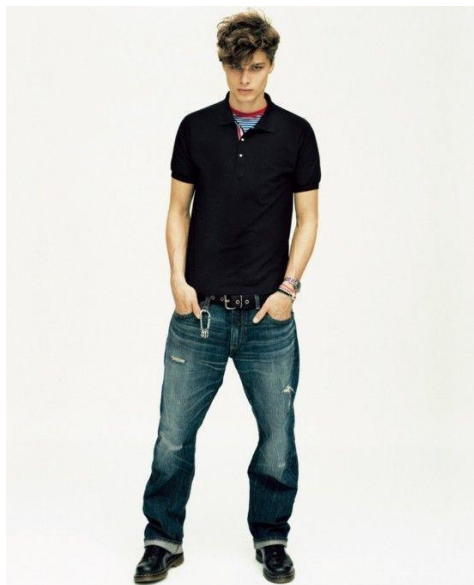


Suits



Tuxedo

Not Appropriate Mens Styles



Jeans, no tie



Shorts, t-shirt, ball cap